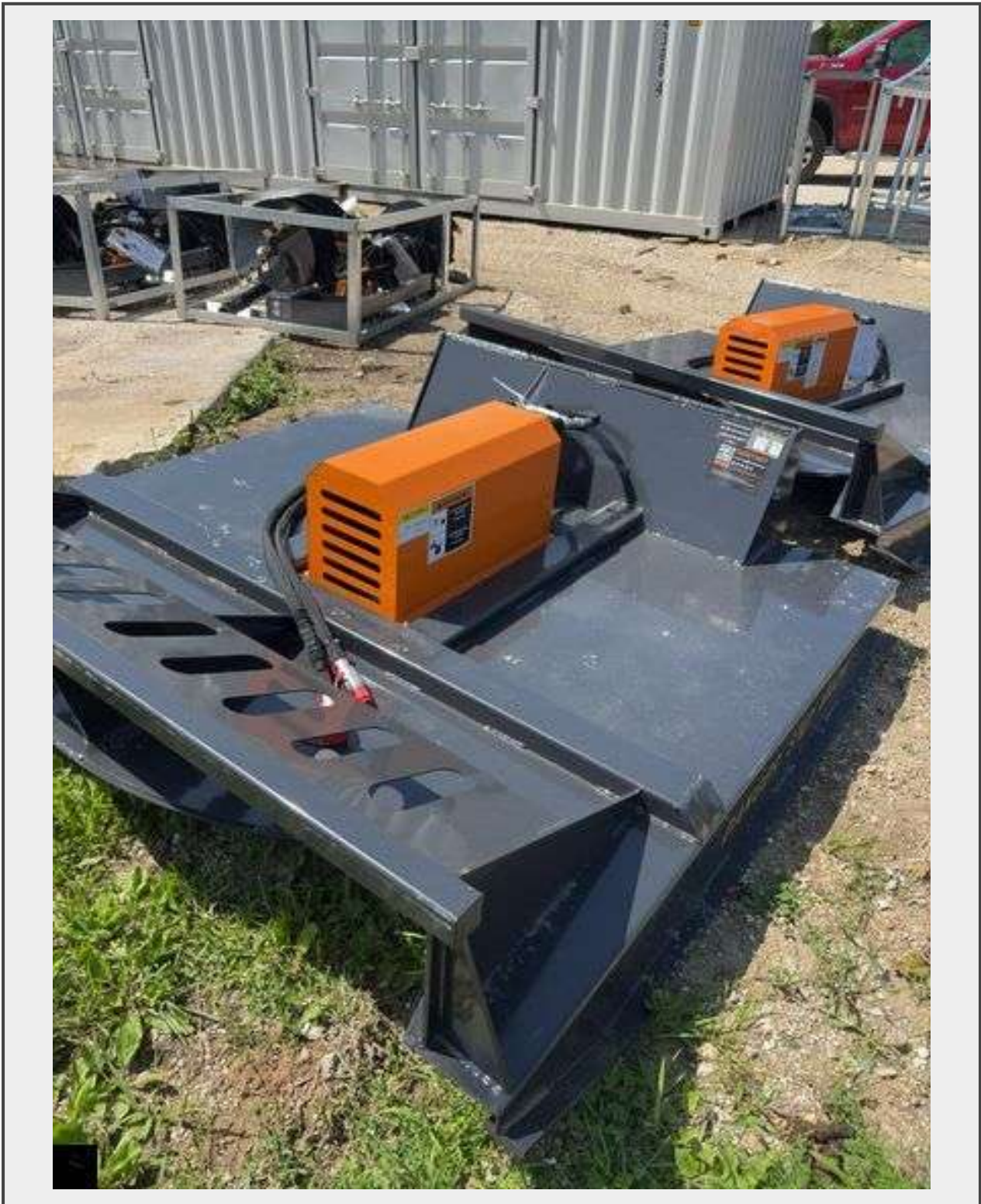


Sale Name: HCA June Equipment and Container Auction - Wright City, MO

LOT 1016 - 2025 Wolverine BC-13-72W 72" Brush Cutter



Year 2025

Model BC-13-72W

Description

Unused 2025 Skid Steer Brush Cutter Attachment

Serial No. ZWD202504111-4/01788
Weight: 776 lbs
Hydraulic Flow Required: 14-20 gpm
Cutting Blades: 2
Material Cutting: Up to 3" dia.
Cutting Width: 66 in
Wide (Overall): 72 in
Height (Overall): 21.6 in
Minimum Cutting Height: 2 in
Deck Thickness: 3/16 in
Length (Overall): 76 in

Year 2025
Model BC-13-72W
Quantity: 1



<https://bids.bidwithhca.com/>