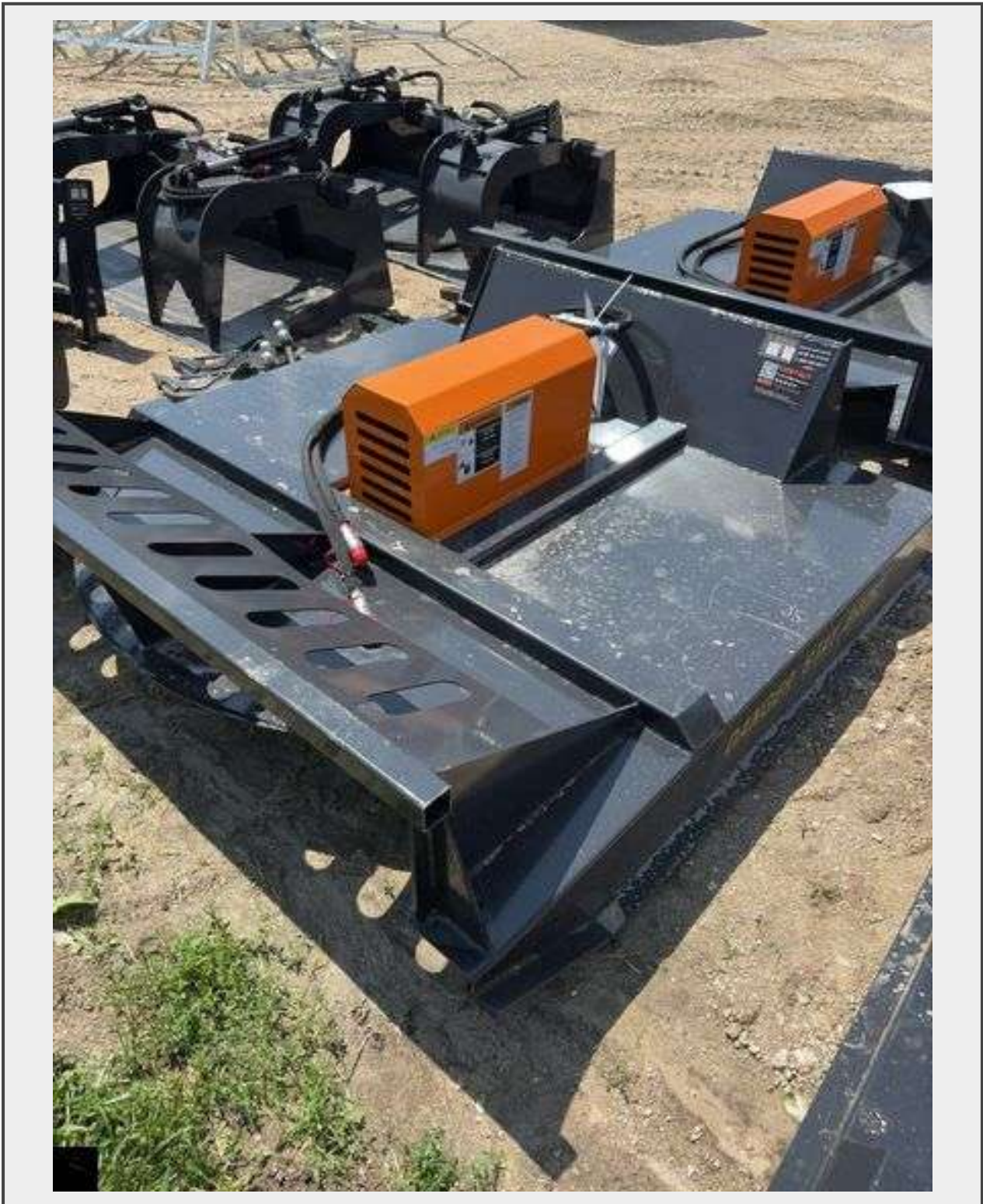


**Sale Name:** HCA June Equipment and Container Auction - Wright City, MO

**LOT 1013 - 2025 Wolverine BC-13-72W 72" Brush Cutter**



**Year** 2025

**Model** BC-13-72W

**Description**

Unused 2025 Skid Steer Brush Cutter Attachment

Serial No. ZWD202504111-1/01785  
Weight: 776 lbs  
Hydraulic Flow Required: 14-20 gpm  
Cutting Blades: 2  
Material Cutting: Up to 3" dia.  
Cutting Width: 66 in  
Wide (Overall): 72 in  
Height (Overall): 21.6 in  
Minimum Cutting Height: 2 in  
Deck Thickness: 3/16 in  
Length (Overall): 76 in

**Year** 2025  
**Model** BC-13-72W  
**Quantity:** 1



<https://bids.bidwithhca.com/>